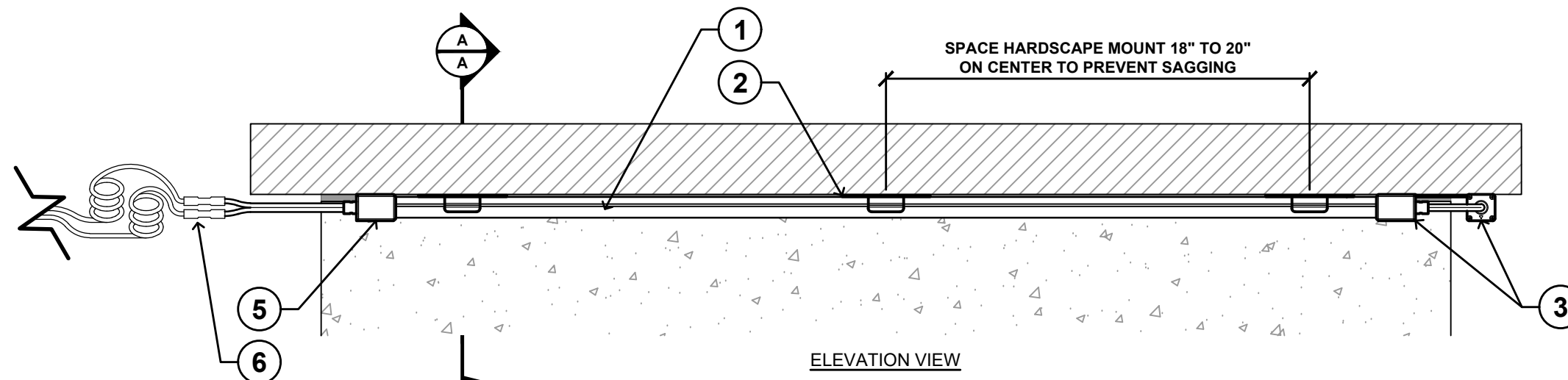


SECTION VIEW A-A

PLAN VIEW



ELEVATION VIEW

LEGEND

- ① FX LUMINAIRE SRP STRIP LIGHT (SRP-SERIES) PER PLAN
- ② HARDSCAPE MOUNT (SRP-MNT) SPACED 18" TO 20" PER PLAN: EMBED IN CAPSTONE MORTAR OR ADHESIVE
- ③ JUMPER CABLE (3" OR 6") WITH U-SPACER AND CLAMP
- ④ END CONNECTOR
- ⑤ POWER FEED
- ⑥ DIRECT BURY, UF/UL 486 D (IEC/EN 60998) COPPER, LOW-VOLTAGE CABLE WITH WATERPROOF CONNECTIONS: LEAVE 18" [500 MM] MINIMUM WIRE LOOP COILED BELOW FIXTURE FOR SERVICE
- ⑦ CAPSTONE
- ⑧ ADJACENT WALL OR SURFACE

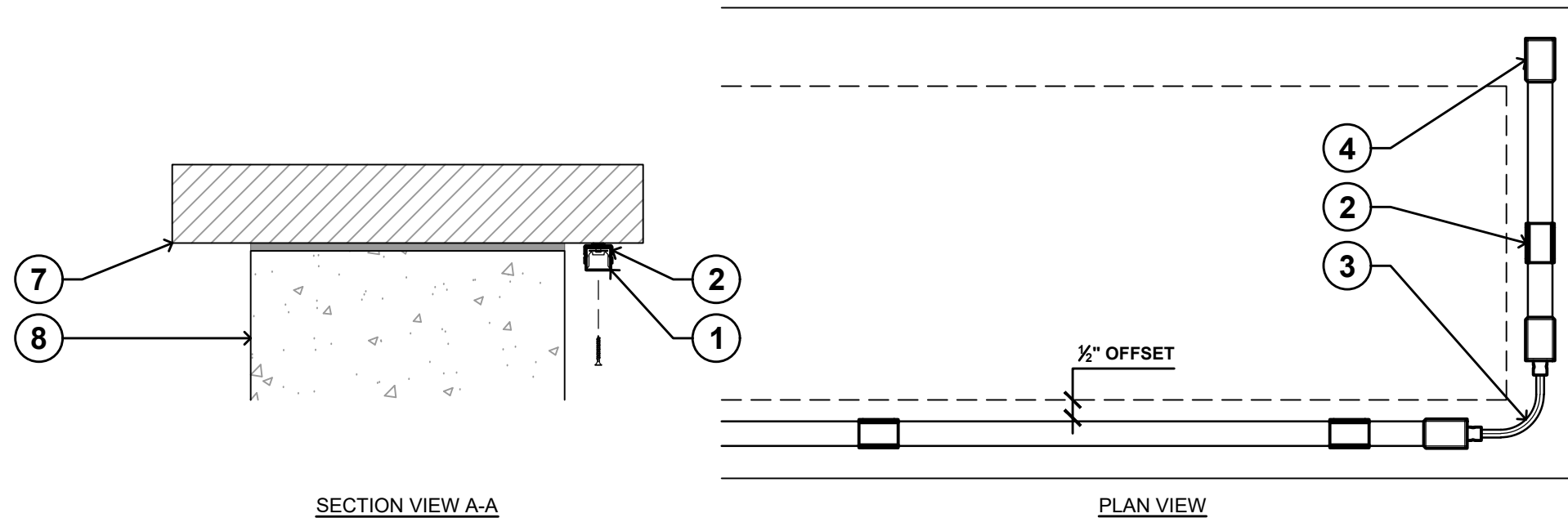
NOTES

1. INSTALLATION TO BE COMPLETED IN ACCORDANCE WITH MANUFACTURER'S SPECIFICATIONS
2. TRIM STRIP LIGHT IN 2" INCREMENTS FOR PRECISION CUSTOMIZATION
3. FIXTURE REQUIRES 10-15 VOLTS AC/DC
4. INSTALL TO A UL 1838 (IEC/EN 61347) LISTED TRANSFORMER

00 SRP SERIES STRIP LIGHT WITH HARDSCAPE MOUNTING PLATE

N.T.S.

SRP-STRIP-01 | www.fxl.com | **FXLuminaire**



LEGEND

- ① FX LUMINAIRE SRP STRIP LIGHT (SRP-SERIES) PER PLAN
- ② MOUNTING CLIPS (INCLUDED) SPACED 12" ON CENTER: SECURE MOUNT TO CAPSTONE WITH APPROPRIATE FASTENERS
- ③ JUMPER CABLE (3" OR 6") WITH U-SPACER AND CLAMP
- ④ END CONNECTOR
- ⑤ POWER FEED
- ⑥ DIRECT BURY, UF/UL 486 D (IEC/EN 60998) COPPER, LOW-VOLTAGE CABLE WITH WATERPROOF CONNECTIONS: LEAVE 18" [500 MM] MINIMUM WIRE LOOP COILED BELOW FIXTURE FOR SERVICE
- ⑦ CAPSTONE
- ⑧ ADJACENT WALL OR SURFACE

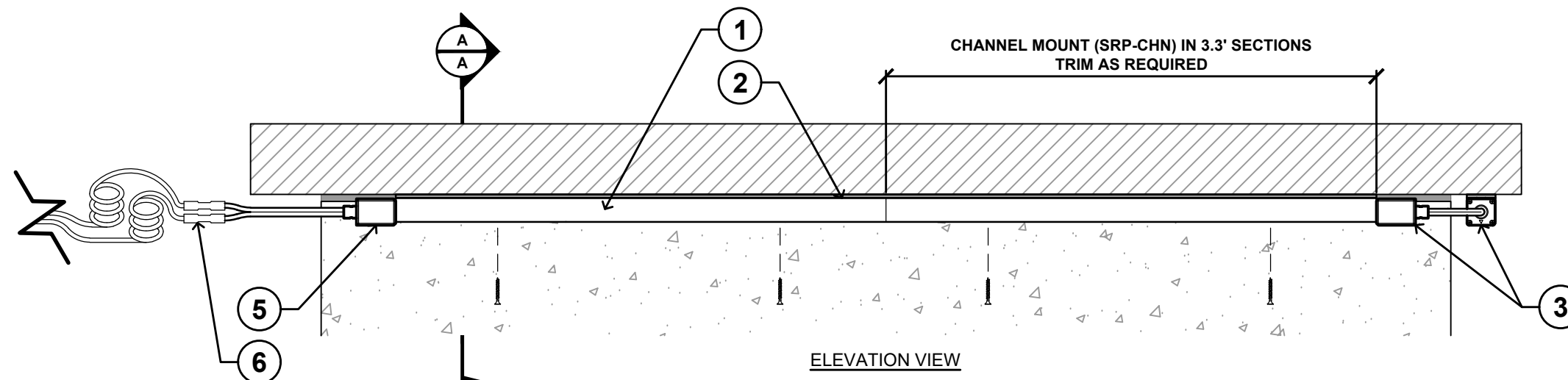
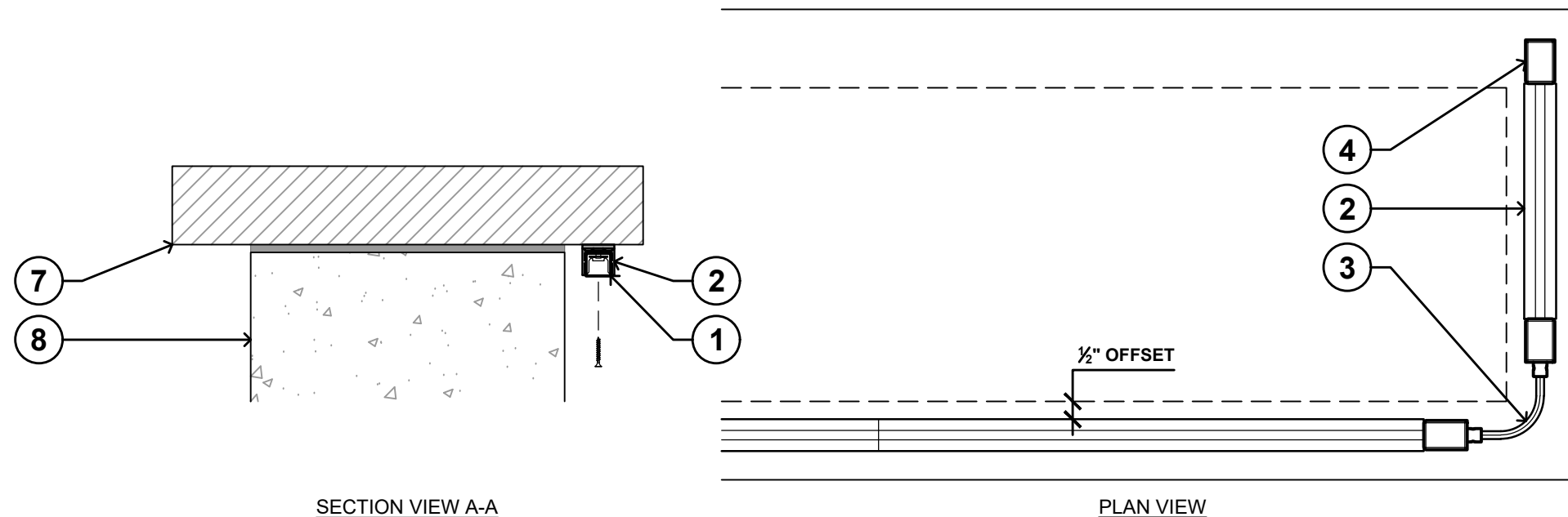
NOTES

1. INSTALLATION TO BE COMPLETED IN ACCORDANCE WITH MANUFACTURER'S SPECIFICATIONS
2. TRIM STRIP LIGHT IN 2" INCREMENTS FOR PRECISION CUSTOMIZATION
3. FIXTURE REQUIRES 10-15 VOLTS AC/DC
4. INSTALL TO A UL 1838 (IEC/EN 61347) LISTED TRANSFORMER

00 SRP SERIES STRIP LIGHT WITH MOUNTING CLIPS

N.T.S.

SRP-STRIP-02 | www.fx.com | **FXLuminaire**



LEGEND

- ① FX LUMINAIRE SRP STRIP LIGHT (SRP-SERIES) PER PLAN
- ② ALUMINUM CHANNEL MOUNT (SRP-CHN) PER PLAN: SECURE MOUNT TO CAPSTONE WITH ADHESIVE AND OPTIONAL FASTINERS
- ③ JUMPER CABLE (3" OR 6") WITH U-SPACER AND CLAMP
- ④ END CONNECTOR
- ⑤ POWER FEED
- ⑥ DIRECT BURY, UF/UL 486 D (IEC/EN 60998) COPPER, LOW-VOLTAGE CABLE WITH WATERPROOF CONNECTIONS: LEAVE 18" [500 MM] MINIMUM WIRE LOOP COILED BELOW FIXTURE FOR SERVICE
- ⑦ CAPSTONE
- ⑧ ADJACENT WALL OR SURFACE

NOTES

1. INSTALLATION TO BE COMPLETED IN ACCORDANCE WITH MANUFACTURER'S SPECIFICATIONS
2. TRIM STRIP LIGHT IN 2" INCREMENTS FOR PRECISION CUSTOMIZATION
3. FIXTURE REQUIRES 10-15 VOLTS AC/DC
4. INSTALL TO A UL 1838 (IEC/EN 61347) LISTED TRANSFORMER

00 SRP SERIES STRIP LIGHT WITH ALUMINUM CHANNEL

N.T.S.

SRP-STRIP-03 | www.fx.com | **FXLuminaire**